

**OFFICE OF
THE
LOGAN COUNTY
ENGINEER**

**ANNUAL REPORT
2006-2007 ROAD REVIEW**

April 1, 2007



*Scott C. Coleman, P.E., P.S.
Logan County Engineer*

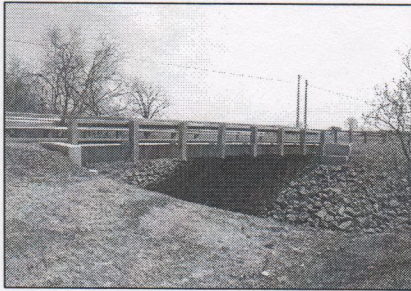


TABLE OF CONTENTS	
Employees of the Logan County Engineer's Office	2
Message from Your County Engineer	3-4
Condition of Our Highway System	4
2006 Revenues	5
Sales Tax Balance Sheet	5
2006 Expenditures	6
2006 Major Equipment Purchases	6
2006 Road Program	7-8
2007 Road Program	9-10
2006 Bridge Program	10
2007 Bridge Program	10
Administrative/Staff Support	11
Design/Engineering	11
Traffic Department	11
Courthouse Duties	11
Building Authority	12-13
2006 Motor Vehicle Registrations	13
Executive Summary	14

EMPLOYEES OF THE LOGAN COUNTY ENGINEER'S OFFICE		
County Engineer		
Scott C. Coleman, P.E., P.S.		
Engineering Department		
Michaela Brunke Curtis D. Dill, P.S. Kristin Knight, P.E. Dennis Stryker	Shirley Brunke Dianne Gauder Sam Ragland	Greg Dappert Harvey Grimes Bob Simmons
Map Room		
Jayma Burkhammer	Jon Hines	Suzie Yoesting
Road Department		
Matt Archer John Berry M. Elliott Fullerton Ramon Lianez Jackie Norviel Greg Swonguer	Larry Artis Jeremy Burrey Ron Hanson Dan McMillen Bob Schrader Steve Tracey	Butch Banning Todd Coleman Mark Hilty Joel Miracle John Spencer
Bridge Department		
Rick Archer Shane Long	Greg Kennaw Keith Price	Jim Logan
Traffic Department		
Mark Dearwester	Richard Cooksey	Don Phipps
Building Authority		
John Cummins Mike Reffitt	Dennis Grogan	Becky Jolliff

Logan County Engineer's Office

April 1, 2007

To the Honorable Board of Logan County Commissioners and the Citizens of Logan County:

The following pages contain our Annual Report for 2006. On the back page, the reader will find a breakdown of the road miles, the number of bridges on our system, along with the number of signs and culverts that we maintain. Also included in this report is what we accomplished in the year 2006, and what we plan to accomplish in 2007.

This year, we resurfaced 25.3 miles of county highways, sealed 32 miles of county highways, replaced or rehabilitated 9 bridges, and more than 20 culverts. Of the bridges that have been replaced in 2006, four had been closed to traffic and four could not carry school buses. We have also assisted the Township Trustees with the resurfacing of 21 miles and chip-sealing 39.2 miles of roads with a combination of sales tax, Ohio Public Works grant funds, and the Townships' own funds.

In 2006, we spent \$123,132.74 on snow and ice control during the calendar year, which is a significant decrease from \$378,351.17 in 2005. This includes 527.88 hours of overtime and 4,659.4 tons of grit. In January of 2005, we experienced the worst ice storm of memory. Many county residents were without electric service for several days. Transportation was hindered by fallen trees and the municipalities suffered heavy damage. During 2006, our office continued the effort to remove dead, damaged, and potentially hazardous trees within the highway right-of-ways. We spent \$101,416.05 on tree and brush removal with over 2,769.16 hours of labor.

The Map Room and the Building Authority have been highly productive this year as well. The Logan County Building Authority issued 337 permits this year, of which, 171 were new dwellings. They also performed a total of 3,340 inspections at a cost of only \$38.99 per inspection in 2006. New home valuations totaled \$23,632,848. The Map Room processed 270 new parcel splits and over 2,900 deeds.

The Map Room has been continuously updating and maintaining the County GIS (geographic information system) for all existing and new parcel splits. This information has been made available to the public on the Logan County Auditor's website at <http://lcaweb.co.logan.oh.us/aweb/>. In spring of 2005, the county contracted to have new digital aerial photography and LiDAR (light detection and ranging) data collected for Logan County. The LiDAR data provides highly accurate ground elevations for the entire county. We are currently working to make more survey data available through the County Engineer's Office website. Please watch for updates at <http://www.co.logan.oh.us/engineer/index.html>.

The engineering and administrative staff has overseen the construction and inspection of the SR 235 turn lane project as a part of the Honda Transmission Manufacturing expansion, reviewed the design plans prepared by the City of Bellefontaine Engineer for the CR 1 hill cut to accommodate the extension of Gunntown Road, designed all of the bridges and large culverts replaced in 2006, prepared all bid documents and specifications for all construction projects, prepared costs estimates, and performed hydraulic analyses for bridges and culverts. We plan bridge replacements and maintenance, road reconstruction, ditch maintenance, equipment needs, and building and grounds maintenance. We maintain and track our inventory, manage billing and payments, track project costs, inspect and issue driveway permits, prepare press releases, plan safety training, perform annual bridge inspections, maintain and update county mapping, inspect subdivisions and stormwater and erosion control measures, comply with state and federal regulations, and answer questions from the public. We perform design and analysis, construction inspection, and surveys for the townships. In 2006, we received \$ 1,245,749.93 in state and federal grant assistance and applied for \$ 709,876 in grants for future projects.

In the fall of 2006, we asked the citizens of Logan County to continue to fund the local transportation system by renewing the ½ percent sales tax for roads and bridges for another five year term. While planning the renewal proposal we recognized the needs of the municipalities within the county and included them in the funding plan for the renewal. The county commissioners were also interested in providing a portion of the renewal for economic development and land use planning. The proposal presented to the public was for 66 % of the funding to be provided for county roads and bridges, 14 % for township roads and bridges, 14% for municipal roads and bridges, and 6 % for long-term economic development and land use planning. On November 7, 2006, the community once again expressed their support for our local transportation system by voting to renew the ½ % sales tax. Collection of the renewed tax under the new distribution plan will begin in October of 2007. We thank the community for their continued support of the highway system and their confidence in our staff.

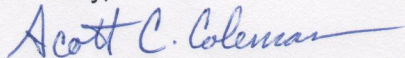
The road and bridges sales tax income for 2006 was \$2,502,729.32. Of these funds, 13.5 percent (prorated for the 9 month period from January through September of 2007), \$253,401.34, will be provided for township roads and bridges. Beginning in October of 2007, 14 % of the monthly sales tax revenue will be set aside for township roads and bridges.

For 2007, we have scheduled another 31 miles for asphalt resurfacing and have planned a 30 mile chip-seal program to preserve the roads that have been resurfaced recently. We also plan to perform a crack sealing project to extend the service life of some of the higher traffic roads in the county.

The Bridge Crew replaced/rehabilitated 9 bridges and performed maintenance on several structures in 2006. They will continue to work diligently to replace/rehabilitate 10 more bridges and complete maintenance work that is scheduled for 2007. Of the 10 bridges scheduled for replacement/rehabilitation in 2007, two are closed to all traffic and four cannot be crossed by school buses.

The Traffic Department has replaced 1,325 permanent signs in 2006. This past year, they placed 283 temporary construction signs, repainted 19 railroad and 8 school crossing zones, and trimmed brush around signs to provide clear sight distance. In 2007, the Traffic Department will be busy overseeing pavement markings, replacing damaged or vandalized signs, installing road construction signage, maintaining the sign inventory, and conducting a new traffic count study on all county roads and bridges.

Sincerely,



Scott C. Coleman, P.E., P.S.
Logan County Engineer

The Condition of Our Highway System

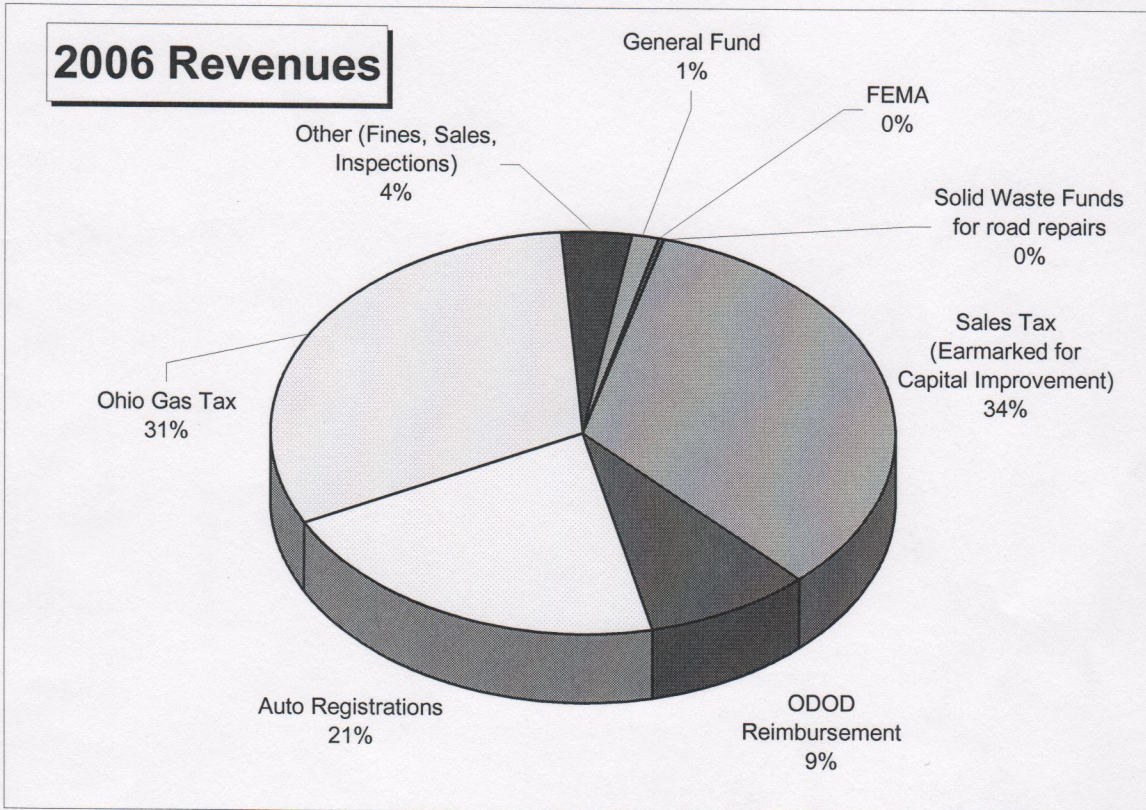
We have been busy this winter trying to keep the highways clear of snow and ice, replacing culverts in preparation for the 2007 resurfacing program, trimming trees and brush from the right-of-way, cleaning road ditches, and re-grading roadway shoulders. Our crews will continue to remove trees and limbs within the right-of-way as a regular maintenance item in order limit damage caused by future ice storms.

Generally speaking, our roads have weathered the winter fairly well, but we continue to see the need to seal our new pavements as soon as possible after resurfacing. Several transportation agencies have started sealing new asphalt immediately after the hot mix paver has left the jobsite. We will complete 31 miles of resurfacing with asphalt concrete and plan to seal about 30 miles. We still have approximately 18 miles of county highways that are rated in poor condition. This is a reduction from 142 miles of poor pavement in 2001. We also have 90 miles that require a surface course of paving. From 2003 through 2005, we placed only the intermediate course of pavement on many of the roads that were resurfaced. This process allowed us to repair more miles of very poor pavements each year than we could have if we had applied both courses at the same time. Since 2001 (inclusive), we have resurfaced over 219 miles of county highways.

We are continuing to make strides with our bridge program. With the replacement of 9 bridges in 2006, we are continuing to upgrade our overall bridge conditions. This year's bridge replacement schedule will reopen 2 bridges that have been closed to all traffic and 4 bridges that school buses are currently unable to cross due to weight restrictions.

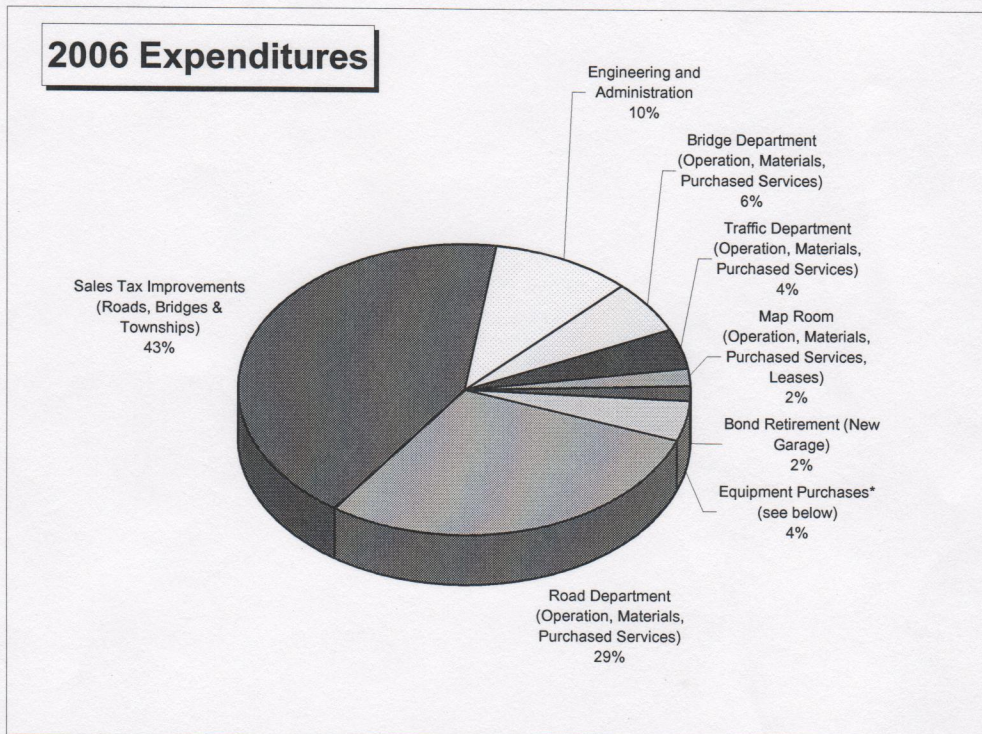
There are 40 bridges with posted load restrictions. Forty-nine bridges are rated a 5 or less and many of the older structures continue to deteriorate as we replace others. Since 2001 (inclusive), we have replaced or performed extensive rehabilitation on 49 structures. Bridge material costs have increased significantly over the last several years. In 2001, we were estimating replacement costs at \$48.00 per square foot of deck area, now we must use at least \$96 per square foot for estimating our bridge program.

2006 Revenues		
Sales Tax (Earmarked for Capital Improvement)	34%	\$ 2,502,729.32
ODOD Reimbursement	9%	\$ 652,919.93
Auto Registrations	21%	\$ 1,577,901.51
Ohio Gas Tax	31%	\$ 2,322,444.66
Other (Fines, Sales, Inspections)	4%	\$ 281,209.27
General Fund	1%	\$ 111,229.88
FEMA	0%	\$ 10,558.00
Solid Waste Funds for road repairs	0%	\$ -
Total		\$ 7,458,992.57



2006 Sales Tax	
Carryover from 2005	\$ 1,290,899.32
Income	\$ 2,502,729.32
Expenditures	
County Sales Tax Resurfacing Program (including culverts)	
Township Sales Tax Resurfacing & Chip Seal Program	
TR 61 Relocation to be reimbursed by ODOD grant	
Bridge 153-0.22 Replacement	
Bridge 137-0.49 Replacement	
Bridge 85-0.26 Replacement	
Bridge 124-0.43 Replacement	
Bridge 242-0.21 Replacement	
Bridge 33-2.66 Replacement	
Bridge 99-0.87 Replacement	
Bridge 253-0.50 Replacement	\$ 2,915,192.69
ODOD Reimbursement	\$ 652,919.93
Total Carryover	\$ 1,531,355.88

2006 Expenditures		
Road Department (Operation, Materials, Purchased Services)	29%	\$1,988,776.52
Sales Tax Improvements (Roads, Bridges & Townships)	43%	\$ 2,915,192.69
Engineering and Administration	10%	\$686,057.42
Bridge Department (Operation, Materials, Purchased Services)	6%	\$400,721.71
Traffic Department (Operation, Materials, Purchased Services)	4%	\$ 299,165.50
Map Room (Operation, Materials, Purchased Services, Leases)	2%	\$144,544.69
Bond Retirement (New Garage)	2%	\$ 111,229.88
Equipment Purchases* (see below)	4%	\$ 303,374.15
Total		\$ 6,849,062.56



*Major Equipment Purchased in 2006	
Camera	\$ 249.98
File Cabinets (2)	\$ 249.98
Computer for Map Room	\$ 2,077.32
Power Tilt attachment for Excavator bucket	\$ 8,700.00
Boat for bridge and ditch inspections	\$ 629.00
Hydraulic Post Driver for Traffic Department	\$ 1,280.00
Dump body, hydraulic system #346	\$ 20,114.00
JCB Wheel Loader	\$ 44,228.05
Laser Level	\$ 369.00
Dump bodies #324 and #312	\$ 16,320.00
Chain Saws (2)	\$ 1,343.84
Case Backhoe	\$ 25,441.90
2006 International Dump Truck w/ plow & sander	\$ 81,830.00
Radio #317	\$ 699.00
Gradall (final of two payments)	\$ 81,657.81
1-Ton Cab & Chassie Truck #302 for Traffic Dept.	\$ 18,010.31
Weedeater	\$ 173.96
Total	\$ 303,374.15

2006 ROAD PROGRAM

The Highway Department is responsible for all Force Account projects (non-contract work performed by County Engineer employees), snow and ice control, berm repair, pavement patching, washouts, guardrail repair, mowing, and other general/seasonal maintenance of county roads and bridges. This department also works closely with the townships on various maintenance needs on their own road systems. The Highway Department was extremely busy in 2006, working ahead for the 2007 road program, in addition to their normal maintenance duties. The costs listed include labor (based on hourly wages of workers and all benefits), amortized equipment, and materials (asphalt and berming stone).

Review of Miscellaneous 2006 Expenses

	Labor	Amortized Equipment	Materials and Contractor Work	Total
Mowing	\$ 60,330.69	\$ 63,451.90	\$ -	\$ 123,782.59
Hand Patching	\$ 4,176.98	\$ 1,464.20	\$ 1,443.45	\$ 7,084.63
Durapatching	\$ 15,866.55	\$ 11,293.30	\$ 8,982.61	\$ 36,142.46
Tree & Brush Removal	\$ 69,178.23	\$ 32,237.82	\$ -	\$ 101,416.05
Culvert Repair & Replacement (not related to resurfacing)	\$ 5,618.75	\$ 3,912.25	\$ 2,770.98	\$ 12,301.98
Sign Repair	\$ 11,678.76	\$ 1,559.15	\$ 2,007.61	\$ 15,245.52
Sign Repair (Vandalism)	\$ 6,843.04	\$ 682.50	\$ 2,820.90	\$ 10,346.44
Sign Replacement	\$ 25,692.86	\$ 2,073.69	\$ 13,898.19	\$ 41,664.74
Snow and Ice Control	\$ 37,343.07	\$ 41,565.86	\$ 44,223.81	\$ 123,132.74

2006 County Sales Tax & Regular Paving Program Completed

ROAD #	Begins	Ends	Total Cost
154	CR 105	SR 347	\$ 38,635.55
144A	SR 347	CR 144	\$ 13,359.11
144	CR 144A	SR 287	\$ 156,646.87
124	CR 142	Union Co. Line	\$ 107,055.37
40	SR 292	SR 274	\$ 276,097.83
139	Hardin Co. Line	Union Co. Line	\$ 34,078.88
5	SR 47	CR 50	\$ 317,561.81
103	SR 68	CR 102	\$ 203,092.15
38	SR 117	CR 254	\$ 89,017.37
96	CR 38 S.	SR 117	\$ 95,543.62
49	CR 105	SR 274	\$ 144,225.32
270	Lakeview NCL	US 33	\$ 87,058.89
61	SR 274	CR 37	\$ 91,185.42
54	CR 61	SR 235	\$ 143,456.51
35	SR 235	SR 47	\$ 96,514.62
Ohio Valley Tr. Park			
Logan Road	CR 130	Harrison Rd.	\$ 69,123.16
Harrison Road	Dead End	Logan Rd.	
Grand Total			\$ 1,962,652.48

2006 County Chip and Seal Program Completed

Road	Begins	Ends	Labor	Equipment	Materials	Total
17	CH 23	SR 720 (Sante Fe)	\$ 2,350.36	\$ 1,787.90	\$ 11,706.55	\$ 15,844.81
17	SR 720	CH87 East				
17	CH 87 East	Auglaize Co. Idle Rd.				
21	CH 24	CH 77 West	\$ 6,410.39	\$ 4,817.05	\$ 39,471.60	\$ 50,699.04
21	CH 77 West	TR 78 West				
21	TR 78 West	CH 58				
21	CH 58	CH 59 West & TR 59 East				
21	CH 59 West & TR 59 East	CH 13 East				
21	CH 13 East	CH 60 (Bloom Center)				
21	CH 60 (Bloom Center)	TR 80				
21	TR 80	SR 274				
23	SR 274 resume	TR 255	\$ 2,969.72	\$ 2,351.20	\$ 16,835.15	\$ 22,156.07
23	TR 225 West	CH 52				
23	CH 52	CH 17 Logan-Auglaize Co. Line				
54	SR 720	CH 52 West & TR 52 East	\$ 5,360.82	\$ 3,822.35	\$ 31,479.60	\$ 40,662.77
54	CH 52 West & TR 52 East	TR 240 East				
54	TR 240 East	SR 274				
54	SR 274	TR 80 West				
54	TR 80 West	CH 60 Southwest				
54	CH 60 Southwest	SR 235				
58	Logan-Shelby Co. Line	CH 23 South & TR 23 North	\$ 4,513.68	\$ 3,351.70	\$ 21,087.60	\$ 28,952.98
58	CH 23 South & TR 23 North	CH 34				
58	CH 34	TR 35 North				
58	TR 35 North	CH 21				
58	CH 21	TR 207				
59	Logan-Shelby Co. Line	TR 23 South	\$ 3,264.53	\$ 2,557.30	\$ 17,220.65	\$ 23,042.48
59	TR 23 South	TR 23 North				
59	TR 23 North	TR 34 North				
59	TR 34 North	CH 34 South				
59	CH 34 South	CH 35 North				
59	CH 35 North	TR 35 South				
59	TR 35 South	TR 53 North				
59	TR 53 North	CH 21				
77	CH 34	TR 35	\$ 2,341.90	\$ 1,724.39	\$ 10,693.41	\$ 14,759.70
77	TR 35	CH 21				
255	SR 235	SR 235	\$ 796.46	\$ 522.10	\$ 2,836.76	\$ 4,155.32
60	Logan-Shelby Co. Line	TR 23	\$ 3,809.39	\$ 3,178.20	\$ 25,396.05	\$ 32,383.64
60	TR 23	TR 34 South				
60	TR 34 South	CH 35				
60	CH 35	TR 53 North				
60	TR 53 North	TR 53 South				
60	TR 53 South	CH 21(Bloom Center)				
60	CH 21 (Bloom Center)	TR 79 South				
60	TR 79 South	CH 54 End				
27	SR 235	TR 207	\$ 1,038.55	\$ 863.70	\$ 4,380.05	\$ 6,282.30
27	TR 207	SR 235				
27	SR 235	TR 207				
27	TR 207	SR 235				
Total Chip & Seal Program						\$ 238,939.11

2007 ROAD PROGRAM

We have reviewed each road on the program for needed culvert replacements, bridge replacements and/or repairs, drainage problems, etc. As of March 23, 2007, the proposed resurfacing and chip-seal programs for the County are as follows:

2007 Proposed County Resurfacing Program					
ROAD #	Begins	Ends	ROAD #	Begins	Ends
39	CR 130	TR 56	1	SR 245 & SR 287	CH 47
39	TR 56	Dead End	1	CH 47	CH 5
39	TR 56 Pvt Change	CR 37	1	CH 5	TR 30
39	CR 37	SR 274	1	TR 30	TR 190
39	SR 274 CHEROKEE	CH 222 WEST	1	TR 190	TR 55
39	CH 222 WEST	TR 108 EAST	1	TR 55	TR 199
39	TR 108 EAST	TR 100 MCARTHUR & RICHLAND	1	TR 199	CH 29
			1	CH 29	DOROTHY LANE RIGHT
25	SR 540 (resume)	SR 47 (suspend)	1	DOROTHY LANE RIGHT	TR 181 EAST
25	SR 47 (resume)	TR 136 EAST	1	TR 181 EAST	LAKE AVENUE WEST
25	TR 136 EAST	TR 57 WEST			
25	TR 57 WEST	CH 9	5	CH 25	CH 2
			5	CH 2	SR 540 suspend
272	CH 286 SEMINOLE ISLAND	EAGLE DR (R)			
272	EAGLE DR (R)	CHINOOK DR (R)	11	SR235	TR 45 EAST
272	CHINOOK DR (R)	CHEROKEE DR (R)	11	TR 45 EAST	CH 43 EAST
272	CHEROKEE DR (R)	BLACKHAWK DR (R)	11	TR 43 WEST	TR 208 WEST
272	BLACKHAWK DR (R)	SIOUX DRIVE (R)	11	TR 208 WEST	TR 209 WEST
272	SIOUX DRIVE (R)	WYANDOT DR (R)	11	TR 209 WEST	TR 33 SOUTH PLE & HAR TWP LINE
272	WYANDOT DR (R)	SCIOTO DR (R AND L)	11	TR 33 SOUTH PLE & HAR TWP LINE	TR 33 NORTH
272	SCIOTO DR (R AND L)	PIQUA DR (R)	11	TR 33 NORTH	CH 31 SOUTH & TR 31 NORTH
272	PIQUA DR (R)	HURON DR (L)	11	CH 31 SOUTH & TR 31 NORTH	TR 46
272	HURON DR (L)	HURON DR (L)	11	TR 46	TR 201 SOUTH
272	HURON DR (L)	WYANDOT DR. (R)	11	TR 201 SOUTH	TR 198 SOUTH
272	WYANDOT DR. (R)	STATE ROUTE 368	11	TR 198 SOUTH	TR 204 SOUTH
			11	TR 204 SOUTH	TR 32
286	TRAFFIC CIRCLE ON MINNEWAUKEN ISLAND	BRIDGE MINNEWAUKEN ISLAND			
286	BRIDGE MINNEWAUKEN ISLAND	MAPLE STREET (L)	105	CH 39 NEW RICHLAND	CH 49
286	MAPLE STREET (L)	WALNUT STREET (L)	105	CH 49	ENTRANCE TO NORTHWOOD STONE
286	WALNUT STREET (L)	OAK STREET (L)	105	ENTRANCE TO NORTHWOOD STONE	CH 106 NORTHWOOD
286	OAK STREET (L)	ASH STREET (L)			
286	ASH STREET (L)	TECUMSEH ISLAND BRIDGE	235	SR 540	SR 540
286	TECUMSEH ISLAND BRIDGE	CRANETOWN ISLAND BRIDGE			
286	CRANETOWN ISLAND BRIDGE	COUNTY ROAD 272 (L)	235A	SR 540	BELLEFONTAINE WCL
286	COUNTY ROAD 272 (L)	EAGLE DRIVE (L)			
286	EAGLE DRIVE (L)	CHINOOK (L)			
286	CHINOOK (L)	CHEROKEE (L)			
286	CHEROKEE (L)	HEIDI COURT (R)			
286	HEIDI COURT (R)	BLACKHAWK (L)			
286	BLACKHAWK (L)	STATE ROUTE 368/CR 272			

Note: Some sections of roads may be non-performed in order to stay within budget.

2007 PROPOSED COUNTY CHIP SEAL PROGRAM					
Road #	Begins	Ends	Road #	Begins	Ends
113	CR 101 & CR 111	SR 638 ENTER	87	CR 17 LOGAN-AUGLAIZE CO. LINE	TR 86 SOUTH
113	SR 638 Leave	US 68	87	TR 86 SOUTH	TR 86 NORTH
65	LOGAN-CHAMPAIGN CO. LINE	TR 295 EAST	87	TR 86 NORTH	TR 84 SOUTH
65	TR 295 EAST	TR 295 WEST	87	TR 84 SOUTH	TR 83 SOUTH
65	TR 295 WEST	SR 508-SOUTH CORP. DEGRAFF	87	TR 83 SOUTH	CR 275
66	LOGAN-CHAMPAIGN CO. LINE	TR 295 EAST	35	CR 59 (RESUME)	CR 60
66	TR 295 EAST	TR 71 EAST	35	CR 60	SR 274
66	TR 71 EAST	EAST CORP. LINE OF QUINCY	28	CR 168 WEST	CR 171 WEST
101	SR 638 NORTHWOOD	CR 111 & 113 EAST NORTHWOOD	28	CR 171 WEST	SR 287 (SUSPEND)
111	US 68	CR 112 SOUTH TR 112 NORTH	28	SR 287 (RESUME)	TR 163 EAST
254	CR 98/TR 98	CR 38 / TR 38	28	TR 163 EAST	TR 164
88	CR 17	TR 86	28	TR 164	CR 29 PICKRELLTOWN
88	TR 86	CR 90	34	SR 235	CR 73 WEST
88	CR 90	US 33	34	CR 73 WEST	TR 74 EAST MIAMI & PLEASANT TWP.
38 spur	SR 366	CR 38	34	TR 74 EAST MIAMI & PLEASANT TWP.	DT&I RR
38	SR 366	CR 38 SPUR	34	DT&I RR	CR 74 WEST
38	CR 38 SPUR	BICKHAM BRIDGE	171	SR 245	TR 166
38	BICKHAM BRIDGE	CR 98	171	TR 166	TR 169 SOUTH
38	CR 98	CR 96	171	TR 169 SOUTH	TR 169 NORTH
98	CR 38	TR 96	171	TR 169 NORTH	CR 28
98	TR 96	CR 254 / TR 98			
90	CR 88	TR 89			
90	TR 89	AUGLAIZE CO. LINE			
275	CR 87	CLOSED BRIDGE			

2006 BRIDGE PROGRAM

Our Bridge Crew again had another good year. In addition to repairing and replacing bridges and culverts, they worked on snow and ice control. This means the Bridge Crew must be able to proficiently switch from a bridge project to snow and ice control and back again.

As of March 1, 2007, all of the annual bridge inspections were complete. The Bridge Crew replaced 10 structures and performed significant repairs to several other structures.

Structures Replaced:

- Township Road 85-0.26 Bridge Replacement
- Township Road 35-4.24 Bridge Replacement
- County Road 124-0.43 Bridge Replacement
- Township Road 242-0.21 Bridge Replacement
- Township Road 99-0.87 Bridge Replacement
- Township Road 213-1.35 Bridge Replacement
- Township Road 178-0.14 Bridge Rehabilitation
- County Road 153-0.22 Bridge Replacement
- Township Road 75-0.80 Bridge Replacement

2007 BRIDGE PROGRAM

In the 2001 renewal of the sales tax for roads and bridges, the priority was based on condition. Therefore, the 2007 Bridge Program continues the commitment of prioritizing bridge replacements based on condition. The County infrastructure will be re-evaluated periodically and changes to this program are likely to occur in order to achieve our commitment to repair or replace the structures and highways in the worst condition first.

As of March 5, 2007, the proposed Bridge Program is as follows:

- Township Road 137-0.49 Bridge Replacement
- County Road 113-1.73 Bridge Replacement
- Township Road 173-0.12 Bridge Replacement
- Township Road 157-0.60 Bridge Replacement
- County Road 35-5.40 Bridge Replacement
- Township Road 49-5.93 Bridge Rehabilitation
- Township Road 126-1.39 Bridge Replacement
- Township Road 192-0.43 Bridge Replacement
- Township Road 89-1.25 Bridge Replacement
- County Road 173-0.12 Bridge Replacement

ADMINISTRATIVE/STAFF SUPPORT

This department manages the overall office functions and budget of the Engineer's Office. Since the cost for construction, materials, and equipment are increasing faster than local revenues, the utilization of alternate funding sources is critical to the office. As such, the department administers the Ohio Public Works Commission's State Capital Improvement Program (SCIP) and the Local Transportation Improvement Program (LTIP) for Logan County. The allocation and accounting of these annual funding sources are a significant function of the Engineer's office.

Other responsibilities of the administrative and support staff are human resources, payroll, purchasing requisitions, billing, word processing, contract administration and cost-tracking. Utilizing our cost-tracking system, all of the costs for the Engineer's Office are logged including the costs for surveying, engineering, administration, road work and construction of bridges. Equipment costs are amortized, while the labor costs include all fringes and benefits. In addition to all of the aforementioned accounting functions, this department also handles daily calls from the public and addresses the questions/problems directly or forwards them to the appropriate person.

DESIGN/ENGINEERING

This department performs the engineering design for approximately 95% of the construction projects and directs specialized consultants for the engineering design of the remaining projects. Most of the staff design is done with a Computer Aided Design and Drafting (CADD) system. This department also oversees much of the administrative responsibilities.

TRAFFIC DEPARTMENT

The Traffic Department is responsible for the maintenance of all road signs on county roads and bridge signs on township roads. Road signs now number 6,916. The maintenance of these signs includes installation, preservation and inspection. As part of the inspection process, we look for reflectivity, wind damage, vandalism and overall visibility. Repairing mailboxes damaged during snow removal operations is another part of the Traffic Department's responsibilities along with signing for road closure detours. The Routemarkers main duty is to keep traffic moving safely and to keep the traveling public informed.

COURTHOUSE DUTIES

By law, the County Engineer is the official plat draftsman for the County Auditor. In addition to maintaining maps of all properties by lot, parcel and acreage, the Map Room assigns new house numbers, serves attorneys, surveyors, appraisers, realtors, and private individuals in checking deed descriptions and reviews new surveys for accuracy and compliance. Also, the office periodically updates the digitized tax maps to reflect all new property splits.

The changing and ever growing county community has kept the Map Room very busy. In 2006, they processed approximately 270 new property splits and checked over 2,900 deeds transferring property. They also checked approximately 75 easement and right-of-way documents, reviewed 8 new subdivision plats, and created approximately 100 new house numbers. They also checked over 170 new surveys and provided over 2,000 deed pre-approvals of legal descriptions.

In 2006, the Map Room updated its mapping system. We are now completely digital and have 2005 aerial photography available to the public. Maps are available for viewing online at www.co.logan.oh.us.

BUILDING AUTHORITY

The year 2006 remained consistent with building department activity in 2005. Permits remained lower than the years proceeding 2005. This is also consistent with the nationwide residential building trend. Revenue decreased in contractor registrations. This is related to permit activity and in code book sales, which was discontinued. Revenue increased for reinspection fees. Expenditures decreased except in contract repairs. A new copier was leased as the maintenance costs for the old copier began to exceed the costs to lease a new machine. Equipment costs increased since we needed to purchase additional data hardware and filing cabinets for the state mandates. Code book costs also increased due to purchasing the mandated books. Permits were almost unchanged except for Manufactured Homes on piers and plumbing only.

2007 Projections: There are national indicators that building will pick-up around mid-summer or so. The new state mandates begin this year on May 27, 2007. There should be an increase in permit activity due to the inspections now required on all detached accessory structures greater than 200 square feet, uncovered decks, and all new electrical services including upgrades and relocates. Permit fees will be increased starting March 1, 2007, to accommodate the cost for the required certified back-up inspectors for all areas of inspections instead of just electrical. Sometime this year, the inspections for Manufactured Homes will fall into a completely new division by the state. We will still do the inspections but there will be additional training and certifications required for inspectors. This new division is called the "Ohio Manufactured Homes Commission."

Revenue			
	2006	2005	% of Change
Permit Revenue	\$ 80,540.00	\$ 80,050.00	0.6%
Contractor Registrations	\$ 22,800.00	\$ 25,650.00	-11.1%
Plumbing Inspection Fees	\$ 16,065.00	\$ 16,380.00	-1.9%
Reinspect Fees	\$ 1,900.00	\$ 1,225.00	55.1%
Code Books	\$ -	\$ -	-
Misc	\$ 30.00	\$ 370.00	-91.9%
Application Fees	\$ 7,425.00	\$ 7,375.00	0.7%
Additional Permit Fees	\$ 1,465.00	\$ 850.00	72.4%
Total Revenue	\$ 130,225.00	\$ 131,900.00	-1.3%

Expenditures			
	2006	2005	% of Change
Total Salaries	\$ 89,933.25	\$ 90,799.78	-1.0%
PERS, W/C & Medicare	\$ 14,636.17	\$ 13,469.26	8.7%
Supplies	\$ 2,423.46	\$ 3,395.26	-28.6%
Contract Services	\$ 6,136.69	\$ 6,820.23	-10.0%
Contract Repair	\$ 2,832.01	\$ 1,784.15	58.7%
Equipment	\$ 5,116.52	\$ -	-
Other Expenses	\$ 5,140.57	\$ 5,427.24	-5.3%
Code Books	\$ 615.68	\$ 403.00	52.8%
Total Expenditures	\$ 126,834.35	\$ 122,098.92	3.9%

Permits Issued			
	2006	2005	% of Change
Total of New Homes	153	156	-1.9%
Total of New Mfg. Homes	18	11	63.6%
Total of "Other" Permits	146	151	-3.3%
Plumbing Permits New Homes	8	7	14.3%
Plumbing Permits (remodels)	12	8	50.0%
Total All New Dwellings	171	167	2.4%
Total of All Permits	337	333	1.2%

Inspections			
	2006	2005	% of Change
Building/Structural	1,580	1,472	7.3%
Electrical Inspections	827	767	7.8%
HVAC Inspections	396	370	7.0%
Plumbing Inspections	523	529	-1.1%
Special Inspections	14	1	100.0%
Total Inspections*	3,340	3,139	6.4%

* Includes Reinspections

Home Valuation			
	2006	2005	% of Change
New Home Valuation	\$ 23,632,848	\$ 23,471,896	0.7%
Avg. Valuation Per Home	\$ 138,204	\$ 140,550	-1.7%

Averages			
	2006	2005	% of Change
Total Inspection Stops	1,803	1,668	8.1%
Total Miles Driven	20,587	21,727	-5.2%
Avg Inspections Per Stop	1.8	1.9	-5.3%
Avg Miles Driven Per Stop	11.4	13	-12.3%
Avg Revenue Per Stop	\$ 72.23	\$ 79.08	-8.7%
Avg Expenditure Per Stop	\$ 70.35	\$ 73.20	-3.9%
Avg Revenue Per Permit	\$ 386.42	\$ 396.10	-2.4%
Avg Expenditure Per Permit	\$ 376.36	\$ 366.66	2.6%
Avg Revenue Per Inspection	\$ 38.99	\$ 42.02	-7.2%
Avg Expenditure Per Inspection	\$ 37.97	\$ 38.90	-2.4%

MOTOR VEHICLE REGISTRATIONS

Vehicle registration fees are a significant source of revenue for the Engineer's Office.

2006 Logan County, Ohio Motor Vehicles Registrations	
Type of Registration	# of Units
Passenger Cars	34,716
Motor Homes	395
Motorcycles	2,283
House Vehicles	800
Mopeds	29
Non-Commercial Trailers	5,005
Non-Commercial Trucks	11,587
Farm Truck	305
Buses	54
Commercial Trailers	1,572
Non IRP Trucks	2,107
IRP Trucks	138
Total Vehicle Registrations in 2006	58,991
<i>Total Vehicle Registrations in 2005</i>	<i>59,485</i>

SOURCE: State of Ohio, Bureau of Motor Vehicles

The Office of the Logan County Engineer

1991 CR 13, P.O. Box 427

Bellefontaine, OH 43311

Phone (937) 592-2791

Fax (937) 599-2658

Web Site: www.co.logan.oh.us/engineer

EXECUTIVE SUMMARY

371.85 Miles of County Road

Excellent/Good Condition - 267.85 Miles

Fair/Poor Condition - 104 Miles

300 Bridges

40 Have Load Reductions Posted

27 Have a Sufficiency Rating Less Than 50%

3 are Closed

6,916 Signs

1,583 Culverts

Excellent/Good Condition - 1,384

Fair/Poor/Unknown Condition - 199